

一、对号入座。(在正确的单词下打“√”)(15分)

1. Is that a an orange?

2. — What Where is the bread?

—It's on the table.

3. —How many much is a pencil?

—Two yuan.

4. Fish lives at in rivers.

5. I'm thirsty! I want to eat drink

二、慧眼识珠。(15分)

( ) 1. Cows \_\_\_\_ fly.

A. can B. can't C. want

( ) 2. Let's \_\_\_\_ some soup.

A. have B. has C. have to

( ) 3. I'll get an apple \_\_\_\_ you.

A. to B. for C. at

( ) 4. I don't like meat. It is \_\_\_\_.

A. good B. bad C. nice

( ) 5. My favourite food is \_\_\_\_.

A. noodle B. banana

C. noodles

三、精挑细选。(情景选择)(20分)

( ) 1. 当你问别人是否需要你的帮助时,你说:\_\_\_\_

A. Can you help me?

B. Can I help you?

( ) 2. 在商店里你想知道橡皮的价格,你应这样问售货员:\_\_\_\_

A. What's an eraser?

B. How much is an eraser?

( ) 3. 别人对你说谢谢,你应这样回答他:\_\_\_\_

A. You're welcome.

B. You are right.

( ) 4. 在动物园里参观,你想知道熊吃什么,你会这样问管理员:\_\_\_\_

A. Where do bears live?

B. What do bears eat?

( ) 5. 在家里你问妈妈晚饭吃什么,会说:\_\_\_\_

A. What's for dinner?

B. Would you like some fruit?



6. \_\_\_\_\_ can they do?

A. What    B. Where

C. Who

(    ) 7. I'd like \_\_\_\_\_ egg, some bread and porridge for breakfast.

A. a    B. an    C. some

(    ) 8. What's \_\_\_\_\_ dinner?

A. for    B. in    C. of

五、小兔子该采哪朵蘑菇呢，快帮它选一选吧！（9分）

(    ) 1. Are you hungry?

(    ) 2. Would you like some soup?

(    ) 3. What is it?

(    ) 4. How many?

A. No, thanks.

B. Yes, I'm hungry.

C. Twelve.

D. A fish.

六、看图，填一填。（18分）

1. It's time for lunch.

I want to eat some  \_\_\_\_\_ and



\_\_\_\_\_.

2. It's time for lunch. I want to eat some



\_\_\_\_\_ and

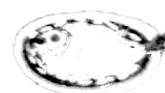


\_\_\_\_\_.


3. It's time for supper. I want to eat some




\_\_\_\_\_ and



\_\_\_\_\_.

4. I don't like  \_\_\_\_\_.

5. My favourite food is  \_\_\_\_\_.

6. I eat some  \_\_\_\_\_ for breakfast.

七、根据中文提示完成下列句子，每空填一词。（15分）

1. ——你喜欢小鸟吗？

——不，我不喜欢。

—\_\_\_\_\_ you like birds?

—No, I \_\_\_\_\_.

2. ——鱼居住在哪里？

——在水里。

—\_\_\_\_\_ does a \_\_\_\_\_ live?

—In the \_\_\_\_\_.

3. 我们一起去动物园吧！我看见了一只熊猫。她很胖。

Let's go to the \_\_\_\_\_! I see a \_\_\_\_\_.

It's \_\_\_\_\_.

4. ——什么动物有长鼻子？

——大象有长鼻子。

—What animal has a \_\_\_\_\_ nose?

—An elephant \_\_\_\_\_ a long nose.

5. ——熊猫居住在哪里？

——住在森林里。

—Where does a \_\_\_\_\_ live?

—In a \_\_\_\_\_.

